



IBHE

A THRIVING ILLINOIS

Higher Education Paths to Equity,
Sustainability, and Growth

2021

Stephanie Bernoteit
Executive Deputy Director
Gateways Higher Education Forum
April 21, 2023

Looking Ahead as Early Childhood Continues to Lead the Way in Equity and Diversity



Reflecting on the 2023 Gateways Higher Education Forum



What excited you as you listened to the presentations?

What makes you proud?

Reflecting on the 2023 Gateways Higher Education Forum



What is your North Star in doing this work?

What is your why?

Reflecting on the 2023 Gateways Higher Education Forum



How do you see this work growing?

In what ways do you see Early Childhood leading the way?

Looking Ahead as Early Childhood Continues to Lead the Way in Equity and Diversity



25 Strategies for a Thriving Illinois



GROWTH

Increase
talent and
innovation
to drive
economic
growth.

1. Leverage the **Illinois Innovation Network**
2. Establish a statewide **Business and Employer Advisory Council** to foster the growth of Illinois' talent pipeline
3. Align the state's **economic development and higher education** strategies, ensuring that both address historic inequities
4. Encourage high school graduates to **stay in-state for college** and keep talent in Illinois
5. Establish a consortium of community colleges and universities to better serve the incumbent **early childhood workforce**
6. Expand higher education models of teaching and learning to prepare students for **success in the work of the future**
7. Enhance access to **teacher preparation** programs
8. Strengthen the **credit transfer system** to help students stay on track
9. Consider the role the **Private Business and Vocational sector** for workforce needs

Growth Strategy 4: Encourage high school graduates to stay in-state for college and keep talent in Illinois



Illinois Postsecondary and Workforce Readiness (PWR) Act - ([Public Act 102-0917](#))

- All school districts must establish at least one career pathway endorsement for the high school diploma
 - Education/early childhood education is an option
- All school districts must adopt the Illinois PaCE Framework or a similar model
 - Chicago Public Schools – by July 1, 2024
 - All Public Schools – by July 1, 2025

Growth Strategy 6: Expand higher education models of teaching and learning to prepare students for success in the work of the future



Looking ahead...



American Association
of Colleges of Nursing

The Essentials: Core
Competencies for the Nursing
Profession



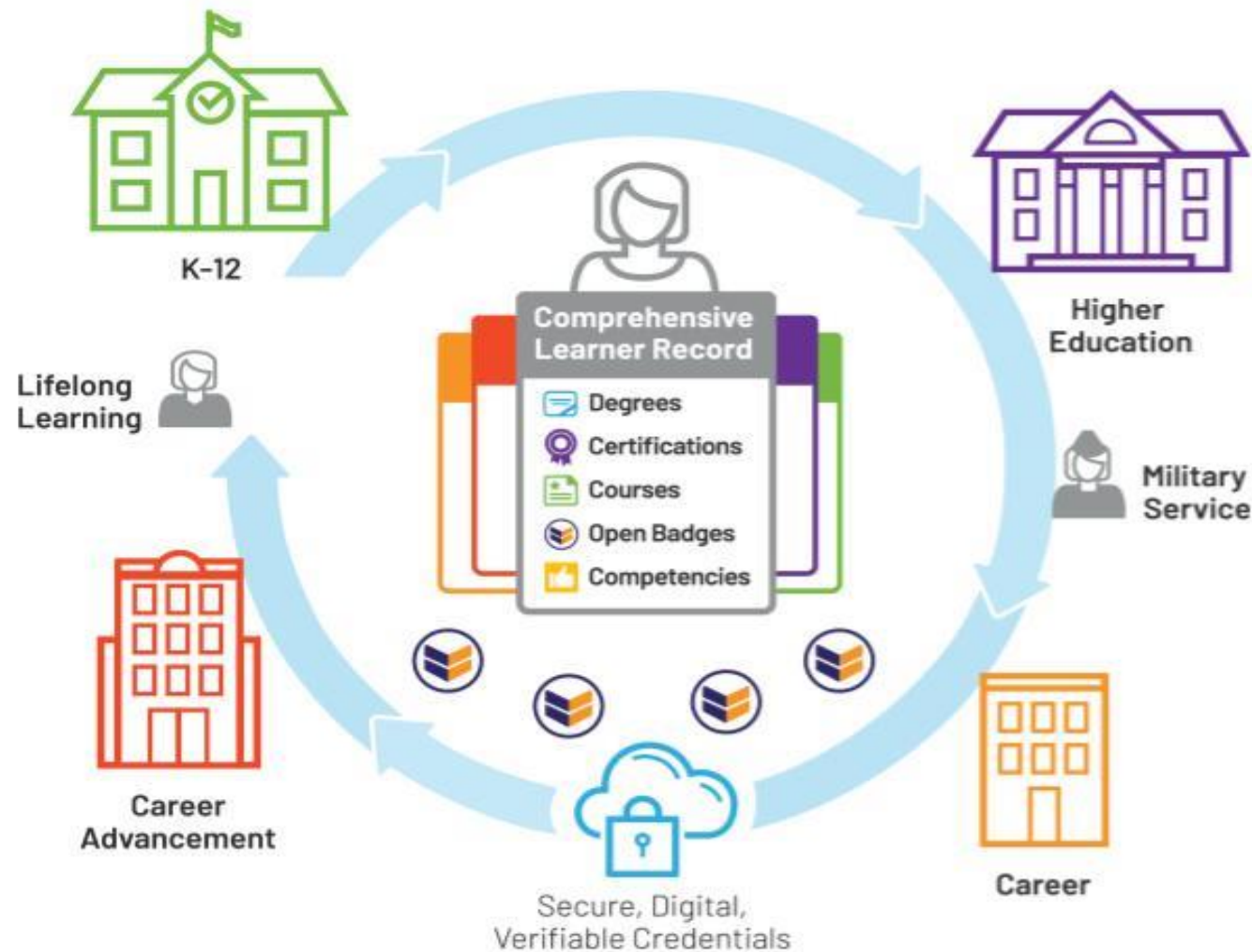
EducationWeek®

The Head of the Carnegie
Foundation Wants to Ditch the
Carnegie Unit. Here's Why



By [Sarah D. Sparks](#) — December 08, 2022 ⌚ 5 min read

Growth Strategy 6: Expand higher education models of teaching and learning to prepare students for success in the work of the future



Looking Ahead as Early Childhood Continues to Lead the Way in Equity and Diversity



Reflecting on the 2023 Gateways Higher Education Forum



What is next for you?

What is next for your program?

With whom do you want to connect to take these next steps?

Looking Ahead as Early Childhood Continues to Lead the Way in Equity and Diversity



**Thank you to the
INCCRRA team
for hosting the
2023 Gateways
Higher Education
Forum!**