

Loose

EXPLORING NATURE

Parts





Sarah Gowler

KCC



Professor and Program Coordinator of Early Childhood Education at Kankakee Community College

I have a variety of professional experiences in the early childhood field, including roles as an educator assistant director, director, parent educator, trainer, and higher education faculty. Creativity and playful learning experiences are foundational to my philosophy as an educator. Whether teaching toddlers or adults, I believe that creativity and brainstorming help develop and apply essential skills that carry over into all areas of life.

*"Creativity is intelligence having fun." Albert Einstein

Sarah Gowler

Professor and Program Coordinator of Early Childhood Education
Kankakee Community College

[100 College Drive](#)

[Kankakee IL 60901](#)

sgowler@kcc.edu

Sarah Gowler

Using loose parts with adult learners

- Ice Breakers/ Introductions
- Building Problem Solving abilities
- Math Activities
- Low cost art supplies
- Reusing/ recycling



Student work together to create from a tray of odds and ends. Students are charged with creating something from the materials give. This is day one of Art & Creative Activities. Students created characters and shared out with others.



I'm Tanille

Owner of ZenDen Studios in
Charleston, IL.



How do
YOU like to
create?



Objectives

Participants will CREATE.

Participants will EXPLORE.

Participants will leave with ideas to use!

Build Teamwork by making something together.



Amelia's Loose Parts Art



When Amelia finds herself without her art box, she learns that art is inside of her, and supplies are all around her... she just has to look for them. Amelia is a young artist who takes her art box everywhere she goes. When she visits her grandma for a sleepover, she realizes she forgot her art supplies at home! What will Amelia do? Will she be able to create masterpieces without her art box? Join Amelia as she learns about loose part art and finds joy in trying new things. Children and adults alike will be inspired by Amelia's resourcefulness and creativity in solving problems.

What should I find and use?



The possibilities are endless.
Happy searching & designing!





Trolls @ The Morton
Arboretum, in Lisle, Illinois



Methodology

Encourage Creativity

Use imagination & problem-solving skills through play, allowing children to explore and construct their own ideas .

OPEN-ENDED

to provide versatile materials that can be manipulated, combined, and transformed in various ways.

Developmental skills...

Foster rich learning environments working on fine motor skills, language development, and cognitive thinking

How to Use The Materials



Loose Parts Mall

- If you don't see what you would like on your table – visit the “Loose Parts Mall”.

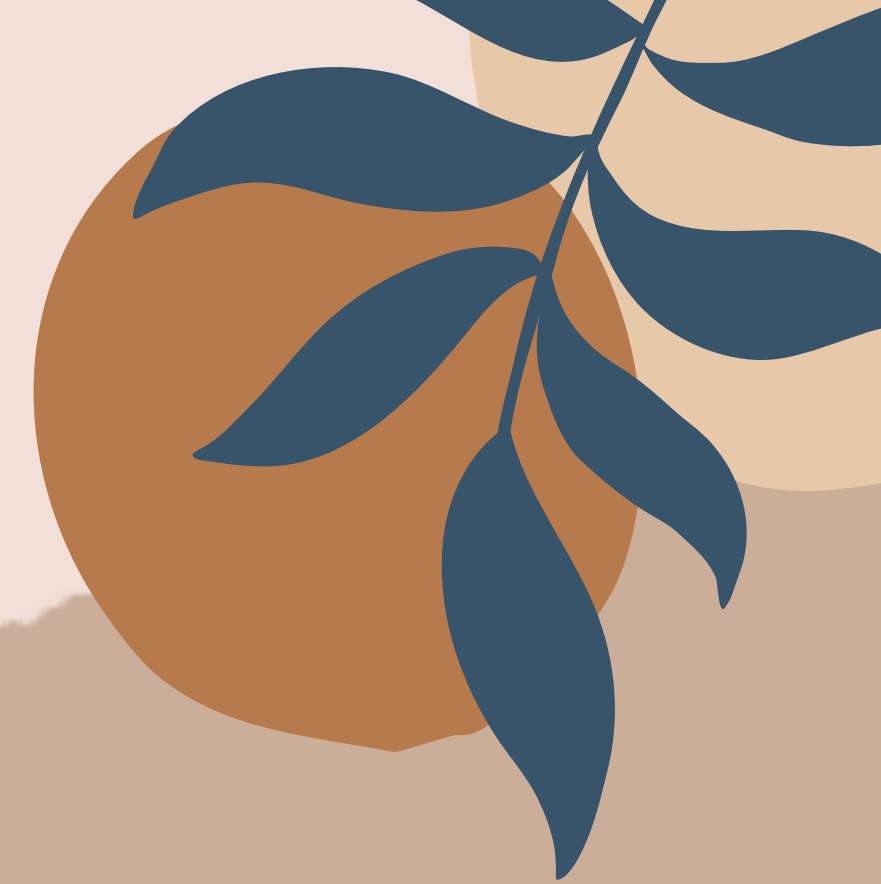
EXPLORE

- Look at what others are creating too.
- Let your imagination run wild!

BUNDLE IT UP

- Hopefully you'll walk away with something you're proud of after this session.
- Start finding your own loose parts to “bring it” to others or future students.





Thank you!

We hope you enjoyed our
session!

