



**Professional Development Advisory Council**

**June 9, 2017**

**10:30AM – Noon**

**Telenet**

Allison Lowe Fotos	Diana Rosenbrock	Marge Holland
Amanda Cardin	Diane Scruggs	Marsha Hawley
April Berthiaume	Dorothy Turner	Melissa Johnson
Beth Berendsen	Gayle Mindes	Pam Womack
Beth Knight	Joan Longtin	Paula Burris
Brenda Smith	Joni Scritchlow	Rebecca Livengood
Cerathel Burnett	Julie Lindstrom	Safiyah Jackson
Christy Allen	Julie Swanberg	Sandy Young
Cindy Berrey	Karen McCarthy	Shallie Pittman
Cindy Mahr	Lauri Morrison Frichtl	Stephanie Bernoteit
Connie Shugart	Lisa Downey	Sue Moustakas
Deb Widenhofer	Lorri Fabry	Tammy Notter
Debbie Rogers Jaye	Lou Anne Mills	Teri Lamb
		Teri Talan

**Welcome, Introductions, Mission and Vision**

- Participants were welcomed by Deb Widenhofer and Marsha Hawley.
- Deb Widenhofer read the mission vision and values of PDAC.

**Review and Approval of the Minutes – Marsha Hawley, Co-Chair**

- April 28, 2017
  - Diana Rosenbrock moved to approve the minutes.
  - Joan Longtin seconded the motion.

**PDAC News**

- **FY 18 Meeting Dates – Julie Lindstrom**
  - PDAC meeting dates were shared. (Attachment 2)
  - Our next PDAC meeting is a joint meeting with ACCESS and ILAECTE at Heartland Community College on September 15, 2017.

**Children’s Cabinet, ELC & Latino Policy Forum Aligning Work**

- Children’s Cabinet Project
  - 1A: Increase the number of bilingual/ESL endorsed teachers.
    - The Latino Policy Forum and the Ounce of Prevention have undertaken the convening of a multilingual ECE Workforce Pipeline Task Force. The group has met twice and will be looking for strategies to improve and increase the number of bilingual teachers.
  - 1B: Reduce the turnover rate among licensed exempt providers.
    - Combined efforts now underway based on the Child Care Development Block Grant (CCDBG) health and safety topics. Workgroup just beginning to think of strategies, and will develop a survey to distribute in August.

- Ashley Becker from Illinois Community College Board (ICCB) and Barb Payne from Illinois Department of Human Services (IDHS) are looking at a subset, to reduce turnover in licensed settings.
  - 1C: Increase ECE Credential Level 1 high schools from 78 to 100.
    - INCCRRA is offering two Train the Teachers trainings.
    - Typically support 3,000 high school students a year that are completing the Gateways Credential Level 1.
    - On-going conversations with Chicago Public Schools (CPS) to explore possibilities with Level 2. Potential of attaining the Level 2 while in high school through advanced coursework.
  - 1D: Train up to 10,000 Child Care providers to attain ECE Credential Level 1.
    - Strategies were shared by Barb Payne and Cindy Wall at the PDAC April 2017 meeting.
      - In addition, there has been a robust use of online trainings in order to meet requirements of the ECE Level 1 training.
  - 1E: Increase the pipeline of PEL teachers with an early childhood endorsement.
    - Some of the first strategies are how do we get distinct numbers that we can use as a starting point.
    - Workgroup formed and will meet in mid-June.
  - 1F: Develop a broad messaging campaign to promote early childhood careers.
    - How do we market to traditional and non-traditional populations?
      - Workgroup has just started to meet to develop strategies.
  - 2A: Education reimbursement initiative
    - Requests are currently under review with disbursement by June 30, 2017.
  - 2B: Level 1 to Level 2 Transitions
    - Committee met and feels that a rule change is not necessary. Policy change not necessarily needed, concerns around limiting the amount of potential college credit that is given for prior learning assessment. This was reviewed under guidance from both co-chairs, and DHS and also looked at the administrative rules under which credentials are administered.
    - Target marketing to providers who currently hold an ECE Level 1 and providers receiving CCAP payment complete Level 1, provide information on the Credential framework (Level 2).
  - 2C: Level 2 to Level 3 Transitions
    - Change was made on Level 3 framework regarding Math, from transferable math to credit-bearing math.
    - ICCB will analyze the information and if needed will present information to the IAI Mathematics panel.
  - 3A: Develop data analytic capacity to track movement of workforce through pathways
    - Looking at existing information systems and what could be added to the systems including the Gateways Registry, the data workforce collection system that would give us the rich range of information we need to collect on our workforce.
- Latino Policy Forum Work Group
  - The work group is actively engaged in section 1A referenced above in the minutes.
- ELC Quality Committee – Teri Talan
  - Committee objective 1 is related to the Children’s Cabinet ECE Workforce Group Project.
  - Committee objective 2 is to provide advisement to the Early Learning Council regarding quality, and to inform the Governor’s office of the work of the committee.
    - Quality Committee will provide an advisory or oversight role regarding ExceleRate. Most of the GOECD staff will leave their positions before the end of June. The Quality Committee can, if needed, move forward recommendations pertaining to ExceleRate to the ELC that relate to budgets or the validation study.
  - An Ad Hoc has been formed to address Senate Bill 1829.

- The Ad Hoc will hold a telenet on June 22, 2017. At that point the Quality Committee might offer recommendations, opposition, and/or refinement. If anyone is interested in joining the telenet please contact Joni Scritchlow.

### **Statewide Updates in Relation to PDAC**

- Illinois State Board of Education – Karen McCarthy
  - All four of the FY 18 continuation grants were released and posted on the ISBE website. These grants include: Prevention Initiative, Preschool for All, Preschool for All Expansion model – federal, and Preschool for All Expansion – state. Programs have until June 30, 2017, to complete continuation grants for a July 1, 2017, start date.
  - The RFP for the Prevention Initiative and Preschool Expansion (state funded model) will be posted soon.
  - All discretionary RFP grant proposal deadlines are now past. ISBE is now reviewing with small teams five different RFPs for StarNet, Preschool for All Professional Development, Early Choices, Child Find, and 3 to 5 year old Monitoring.
- Illinois Head Start Association – Lauri Morrison Frichtl
  - IHSA has named its Leadership Institute after Vanessa Rich – The Vanessa Rich Leadership Experience.
  - The Ways and Means Committee in the U.S. House of Representatives introduced reauthorization of the Maternal, Infant and Early Childhood Home Visiting program (MIECHV) for five years at current funding levels. MIECHV expires in late September 2017.
  - IHSA has worked jointly with ISBE, Illinois Department of Human Services (IDHS), INCCRRA, and Governor’s Office of Early Childhood Development (GOECD) to bring the Pyramid Model of Train the Trainer and the observation tool (the Teapot) to Illinois.
  - IHSA is coordinating with the Family Specialist Credential to crosswalk key certifications.
- DCFS Licensing Advisory Council – Cerathel Burnett
  - The committee has been re-convened as everyone had to be reapproved to be on the committee.
  - Next meeting will be held in later in June.
- Illinois Department of Human Services
  - Anne Wharff asked Joni Scritchlow on behalf of IDHS to extend a thank you to the Illinois Community College Board and the Illinois Board of Higher Education for working with community college ECE programs to realign their early childhood programs with the competencies. 100% submitted all needed competency layout documents by the June 1, 2017 deadline.
  - Outreach will begin this summer with 4- year institutions.
- Governor’s Office of Early Childhood Development
  - Please see Children’s Cabinet work previously mentioned at the beginning of the meeting.
- State Budget – Joyce Weiner
  - The Illinois House has not schedule June sessions to respond to the budget the Senate passed.
  - A stopgap budget remains a possibility.
    - Pressure is coming from the public, human service organizations, and bond raters to come together for a budget agreement before the new fiscal year begins on July 1<sup>st</sup>.

### **Illinois Board of Higher Education Publications & Shared Information – Stephanie Bernoteit**

- Outmigration Infograph
  - A summary prepared by IBHE regarding trends in student choices to enroll in two- and four- year Illinois higher education institutions and/or out of state institutions was shared.
  - For more than a decade Illinois has had intense recruitment from out of state institutions as Illinois has a large population compared to neighboring states.
  - The data on the infograph is from 2015, just before the budget impasse, IBHE hopes to update with information post budget impasse. (Attachment 3)
  - The document was also shared with faculty at the Higher Education Forum this past April.

- *Advancing the Illinois Early Childhood Education Workforce: A Model College and Career Pathway* by Bernoteit, Holt and Kirchhoff
  - This infograph was included in a policy brief published in May by the Illinois Education Research Council. The link to the IERC is included on the handout (Attachment 4).
- The Higher Education Learning and Professional Development Committee (HELP) co-chaired by Stephanie Bernoteit and Cathy Main will become a committee of PDAC in order to continue their efforts regarding areas of embedding competencies within programs and continued outreach to higher education institutions. The committee will meet on October 20, 2017.

## Adjourn





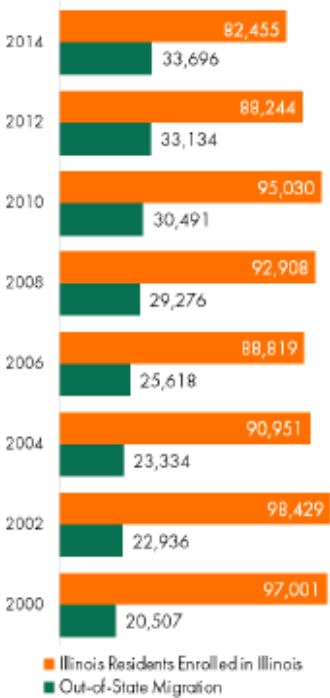
## FY 18 Meeting and Telenet/Webinar Dates

### PDAC:

- **September 15, 2017** Face to Face
  - *ACCESS and ILAECTE joint meeting at Heartland Community College*
- **November 17, 2017 Annual Meeting** Face to Face
- **January 26, 2018** Telenet/Webinar
- **April 27, 2018** Face to Face
- **June 20, 2018** place holder for a potential telenet 1:30PM -3:00PM

# OUTMIGRATION CONTEXT

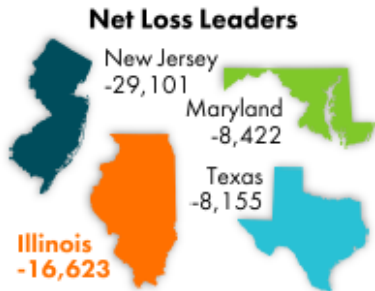
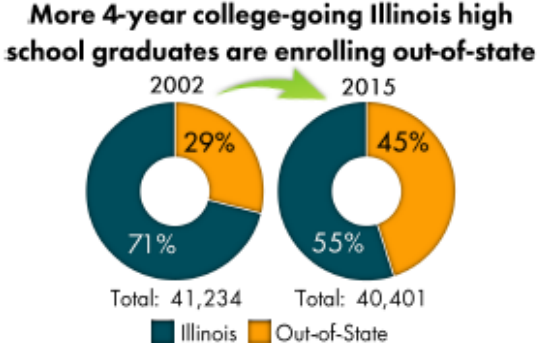
ILLINOIS BOARD OF HIGHER EDUCATION



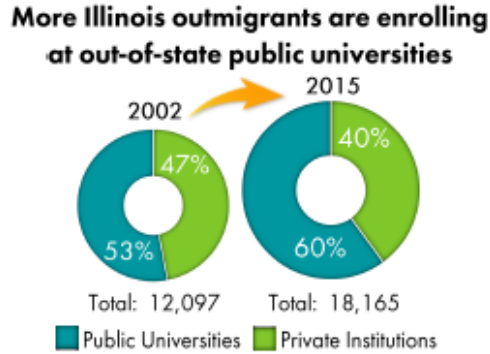
**Number of Illinois residents enrolled as college freshmen:**

↓ in Illinois  
a recent low point

↑ outside Illinois  
all time high



+55% increase in the rate of out-of-state enrollment  
 +50% increase in the number of outmigrants



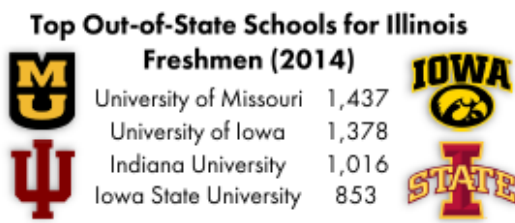
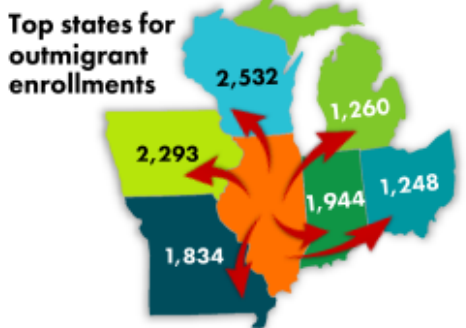
**97% of Illinois high school graduates enrolled at a two-year college attended an Illinois community college**



**3% attended an out-of-state two-year college**

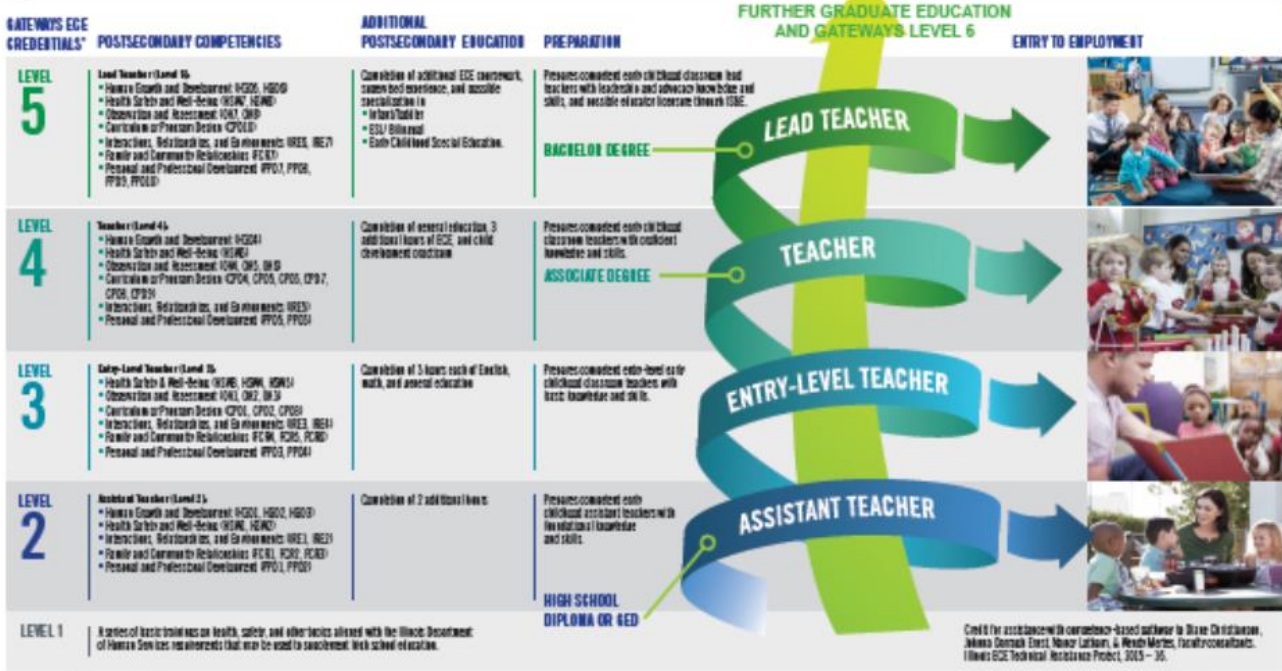


**Illinois Employment Rates**  
 Illinois high school graduates and where they completed college



**ILLINOIS EARLY CHILDHOOD EDUCATOR PREPARATION PATHWAY**

Stephanie A. Bernick and Janet K. Holt



\*Gateways to Opportunity  
<http://www.ilgateways.com>

HGD = human growth and development; HSW = health, safety, and well-being; OVA = observation and assessment; CPD = curriculum or program design; IRE = interactions, relationships, and environments; FCR = family and community relationships; and PPD = personal and professional development.

Suggested citation: Bernick, S. A., & Holt, J. K. (2017, May). *Illinois early childhood educator preparation pathway* (Infographic). Edwardsville, IL: Illinois Education Research Council at Southern Illinois University Edwardsville.

